

Camden Court Cottages - 4

12708 82ND AVE NE, KIRKLAND

\$1.29MM

1,667 SQFT

2,929 SF LOT

3 bed

2.5 bath

2 parking spaces

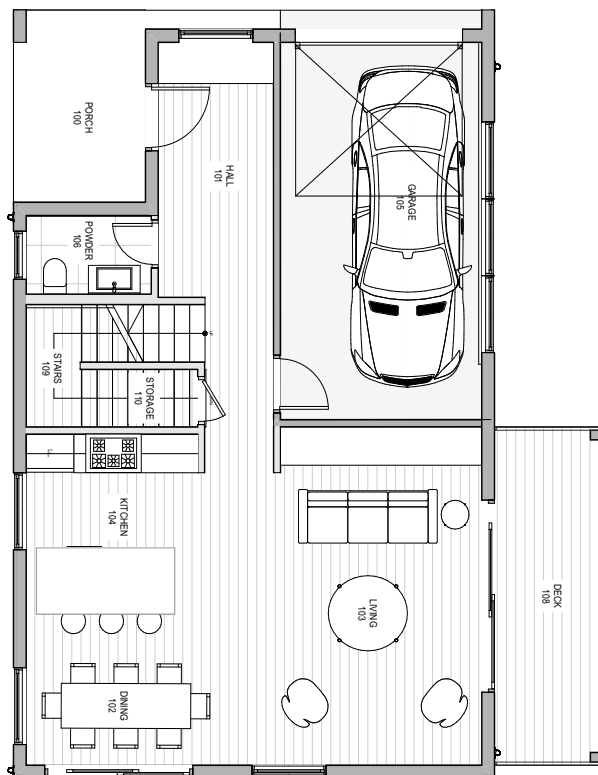
COTTAGE DETAILS

- 9.5' ceilings on main, vaulted ceilings upstairs
- Gourmet kitchen w stainless-steel appliances
- Light-filled great room w access to backyard
- Well-appointed primary suite: WIC w custom organizers, 5-piece spa bath, and deck
- Mini-split heating + cooling w HRV system
- 1-car garage + 1 assigned parking spot
- Honeywell home security + Google Nest Doorbell

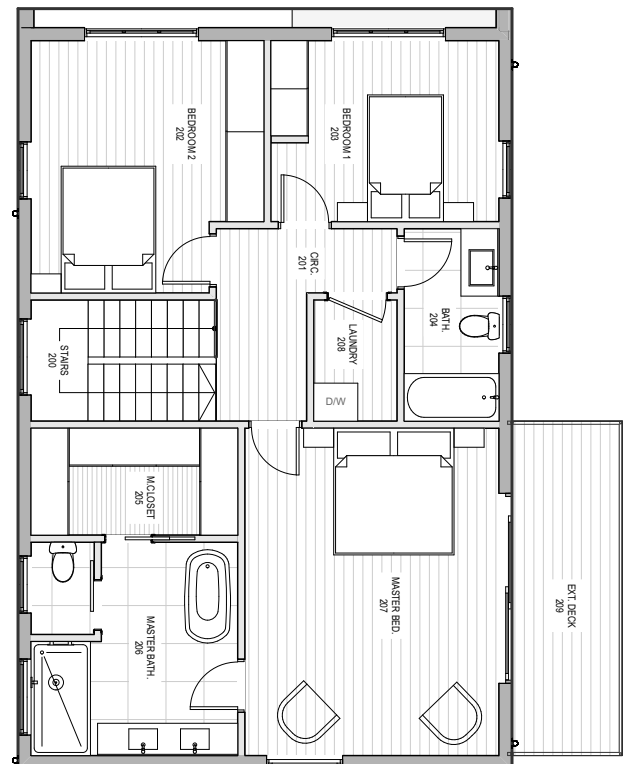


FLOOR PLANS

MAIN LEVEL



UPPER FLOOR





CAMDEN COURT COTTAGES

\$1.29MM | 12708 82ND AVE NE

Introducing, 'Camden Court Cottages' a brand new 6 home cottage community built by Foundation Development, featuring 3 bedrooms, 2.5 bath, 2 parking spaces including a 1-car garage, skylights, and a yard. Conveniently located in the the Finn Hill neighborhood, walking distance to Carl Sandburg Elementary and Finn Hill Middle School.

MLS 2299451

Max Rombakh

MANAGING BROKER
LUXURY MARKETING SPECIALIST

CELL 206.227.0737

EMAIL MAXR@WINDERMERE.COM

WEB MAXROMBAKH.COM

