

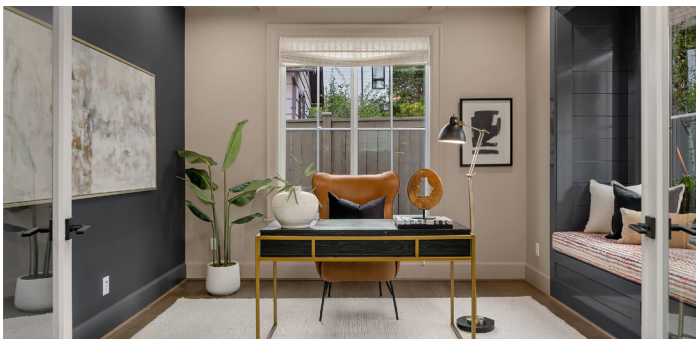


*Experience the Epitome of Bespoke Kirkland  
Living in the Heart of East of Market*



**EAST OF MARKET CUSTOM DESIGNED MODERN FARMHOUSE**

**\$3.55MM**



**LUXURY | STYLE | LOCATION**

**KIRKLAND**  
331 Tenth Avenue

Ideally located in coveted East of Market neighborhood. Easy walk to lively downtown Kirkland, waterfront, schools, Cross Kirkland Corridor, and Kirkland Urban. Sought-after Lake Washington Schools: Peter Kirk Elementary, Kirkland Middle, and Lake Washington High School.



MAX ROMBAKH

STATS

BEDROOMS	<b>6 + OFFICE + BONUS + REC</b>
BATHROOMS	<b>3 FULL + 3/4 + 1/2</b>
TOTAL SQ FT	<b>4,320</b>
LOT SIZE	<b>6,000 SQ FT</b>
YEAR BUILT	<b>2019</b>
TAXES	<b>\$24,109</b>
MLS	<b>2292394</b>

PROPERTY FEATURES

- Professionally landscaped gardens with irrigation and lighting
- Fully-fenced front + backyard
- Inviting covered porch and courtyard with gate
- Covered back patio with infrared heater, gas fireplace, and gas stub
- Alley accessed 2-car garage with EV charger
- Smart Home features: smart lighting, Ring cameras + doorbell, built-in speakers

INTERIOR FEATURES

- Exquisite details + design: extensive millwork, shiplap, wallpaper, built-ins, designer lighting, window coverings and solid core doors
- Gourmet kitchen: Fisher and Paykel appliance package, 8-burner 48" gas range and hood and beverage fridge
- Office + en-suite bedroom on main
- Lower level: massive rec room with 9' ceilings and built-in bar with beverage fridge, two large bedrooms and full bath with heated floors
- Upper floor: bonus room and laundry room with washer/dryer
- Primary suite: vaulted ceilings, 5-piece spa bath with heated floors, walk-in closet with custom organizers



MAX  
ROMBAKH

MANAGING BROKER  
WINDERMERE REAL ESTATE

206.227.0737  
MAXR@WINDERMERE.COM  
MAXROMBAKH.COM

